



PATINA OSAKA: THE FIRST URBAN PATINA HOTELS & RESORTS' PROPERTY IN JAPAN

Patina Osaka honours the land with its unique design concept based on the memories of Japan's City of Water. Patina alike connects to water, the most elemental entity, the flow of life that connects and carries people and planet.

Set to open in 2025, Patina Osaka is the first urban property of Patina Hotels & Resorts, an elevated lifestyle brand by Capella Hotel Group. The approximately-220-room hotel is located opposite Osaka Castle, one of Japan's most prominent historic sites, and next to the noteworthy Naniwanomiya-Ato Park.

Built in homage to Osaka's effortless beauty and vibrancy, the modern 20-storey building is a collaboration between two award-winning Japanese architects and designers: Jun Mitsui & Associates for exterior and Strickland for the interiors. They have woven together a narrative rich in sense of place, while creating an urban sanctuary that inspires shared consciousness between humans.



Tea Lounge, paying nod to Japan's tea ceremony culture
Guestroom with a view of Osaka Castle
Credit: STRICKLAND



Guestroom with a view of Osaka Castle
Credit: STRICKLAND

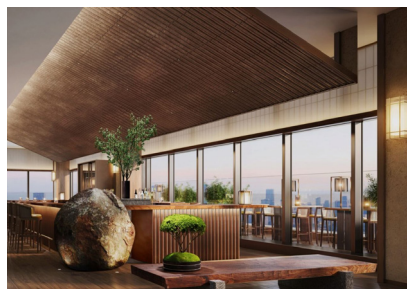
Patina's perpetual journey, a seamless flow of energy, is reflected throughout Patina Osaka's design concept. It all begins when guests step foot inside Roots, the signature plant-based restaurant, and are greeted with an inviting warmth from its earthy hues. Guests will explore what is conscious eating through locally-sourced produce with bold and exciting flavours – including ingredients from the edible garden and outdoor nursery.

Heading up to the rooftop (at level 20) where Fusion, the beating heart of Patina is perched – guests will then check-in. The social spot encourages interactions between guests and locals alike. It features a cocktail bar and listening station run by a DJ and equipped with an extensive vinyl collection – at Patina, music has the power to spark social bonds, fuel the collective energy and invite expression.

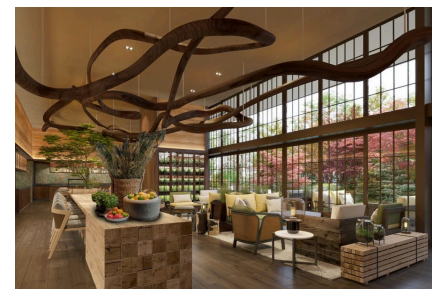
Following the gravity flow of energy, guests may proceed to the spiral stairs which leads to the hotel's brasserie and Tea Lounge on the next storey down. These intimate spaces reveal the layers of nature – allowing visitors to tune into the environment.

Centred around a memories-of-the-land aesthetic philosophy, the hotel's interiors marry a shared love for natural and regional materials with custom art by local artists and artisans. Inspiration was taken from the history of Osaka Castle and Mother Earth, where each level is individually designed to reflect a contemporary take – featuring elements like copper, wood, earth and water.

Each room and suite incorporate a balance between modern and natural aesthetics, showcasing an uninterrupted view of Osaka Castle. Guests can also expect versatile spaces within the room that speak to the convergence of quiet downtime and vibrant activities. Every living area is dynamic, morphing into a fitness ground, a tea appreciation lounge or even a mediation retreat and playpen with the tatami mat - offering seamless transitions between work, play, exercise and wellbeing.



Fusion, a social interaction space
Credit: STRICKLAND



Roots, signature plant-based restaurant
Credit: STRICKLAND

Developed by NTT Urban Development Corporation, a comprehensive real estate company within the NTT Group, Patina Osaka brings desired, unexpected, sophisticated and fresh experiences together.



"We can't wait to launch the first Patina Hotel in Japan, together with our partner, Patina Hotels and Resorts, the lifestyle brand of Capella Hotel Group. Built across the Osaka Castle, Patina Osaka will bring an unexpected fresh experience and raise a new bar of sustainability standards for Osaka." - Hiroshi Tsujigami, Representative Member of The Board President of NTT Urban Development Corporation.

"This is Patina's first foray into Japan and we are looking forward to partner with NTT Group to help establish theirs and our vision in Japan's City of Water. This is a great opportunity for us to continue our growth, bringing Patina's lifestyle as we establish our presence in Japan." – Cristiano Rinaldi, President of Capella Hotel Group

ENDS

NOTES TO EDITORS:

ABOUT PATINA HOTELS & RESORTS

Patina Hotels & Resorts is the latest hospitality concept from Capella Hotel Group. Born out of guests' desire to honour individuality, Patina appeals to a new generation of travellers who seek deeper connections with themselves and the world around them. The human centred design flows with the natural modes people are in, gently and intuitively providing for each guest's individual needs, ensuring that no two stays are exactly the same.

Following Patina Maldives, Fari Islands, Patina Osaka will be the second launch and the first urban hotel under this sophisticated lifestyle brand.

ABOUT NTT URBAN DEVELOPMENT CORPORATION

NTT Urban Development ("NTTUD") was established in 1986 as comprehensive real estate company of the NTT Group, and is engaged in a wide range of real estate businesses, focusing on leasing office buildings and commercial facilities which develops and operates, residential properties, hotels and global businesses.

Based in Tokyo, NTTUD has seven branches in Japan and also operates in the United States, the United Kingdom and Australia.

In July 2019, NTTUD became a member of the NTT Urban Solutions Group established under the slogan, "The unique future planning for each city."

NTTUD will thrive to support community development by addressing the diverse challenges faced by each community and by making full use of our experience and expertise in the real estate business and the resources of the NTT Group, including ICT, real estate, energy, and environmental technologies.

For further press information or images on Patina Osaka, please contact:

Nicole Li
(nicole.li@capellahotelgroup.com)
Regional Director of Communications, China
Capella Hotel Group